



# **RULES AND REGULATIONS 50-70**

**Updated April 2023**  
December 2022

## Contents

Regulation	Description	Page
	Contents	1
50	National Championships (County Stages)	2-4
51	National Championships (Final Stages)	5-6
52	National Competitions	7-10
53	Inter-County Championship (Womens - Johns Trophy) & (Mens - Middleton Cup)	11-12
54	Inter-County Double Rink Competition (Womens - Walker Cup) & (Mens - Balcomb Trophy)	13-14
55	Inter-County Junior Double Rink Competition (Women - Amy Rose Bowl) & (Men - White Rose Trophy)	15-16
56	National Top Club Competition (Women)	17-18
57	National Top Club Competition (Men)	19-20
58	National Club Two Fours Competition (Men)	21-22
59	Tony Allcock Trophy National Club Mixed Over 60s Double Rink Competition	23-24
60	National Senior Singles	25
61	National Senior Pairs Competition	26
62	National Champion of Champions Singles Competition	27-28
63	National Mixed Pairs Competition	29
64	National Mixed Fours Competition	30
65	National Family Pairs Competition	31-32
	Sanctions	33-34
	Appendices A - L	35-52
	Revisions	53-55

## **Regulation 50: National Championships (County Stages)**

### **1. General**

- 1.1. All County Championships leading to National Finals shall be administered by the relevant County Association. These must be in accordance with the Bowls England Rules and Regulations set out in this document, and in accordance with the current [Laws of the Sport of Bowls](#).
- 1.2. National Championships comprise of:
  - 1.2.1. Singles (one player, four bowls each, first to 21 shots)
  - 1.2.2. Two-Bowl Singles (one player, two bowls each, 21 ends\*)
  - 1.2.3. Pairs (two players, four bowls each, 18 ends\*)
  - 1.2.4. Triples (three players, three bowls each, 18 ends\*)
  - 1.2.5. Fours (four players, two bowls each, 18 ends\*)
  - 1.2.6. Junior Singles (one player, four bowls each, first to 21 shots)
  - 1.2.7. Junior Pairs (two players, four bowls each, 18 ends\*)
  - 1.2.8. Senior Fours (four players, two bowls each, 18 ends\*)
  - 1.2.9. In the event of scores being equal on all events marked with \*, then an extra end or ends shall be played until a decision is reached
- 1.3. Championships are only open to members of clubs affiliated to Bowls England. For all junior championships, players must be under the age 25 on the 1st April in that year. For the senior fours, players must be over the age of 55 on the 1st April in that year (Sanction B applies).
- 1.4. Players must not enter any Bowls England championship under an assumed name, or allow their name to be submitted by more than one club/county/country in any one year, with the exception the Junior Pairs, where players may belong to different affiliated clubs within the same county (Sanction B applies).
- 1.5. Should a club cease to exist after the entry date, affiliated members are permitted, for one season only, to compete under the name of that club irrespective of which club or clubs they have joined.
- 1.6. County Administrators must submit the number of entrants in each of the National Championships, together with the relevant entry fees to Bowls England no later than the 1<sup>st</sup> March that year (Sanction A applies).
- 1.7. Entries must be made by one named entrant only.
  - 1.7.1. Named entrants are excluded from being a substitute in the same discipline, even when a walkover in the first round has taken place (Sanction B applies).



- 1.7.2. If the named entrant is unable to participate (from the outset) due to exceptional circumstances, the team may request the use of an additional player. Requests must be made in writing to the County Association.
- 1.7.3. If the named entrant changes club/county they may request, via their County Association, approval from Bowls England to have their named entrant status transferred to another entrant in Pairs, Triples & Fours events.
- 1.7.4. The named entrant may move Singles entries subject to County approval.
- 1.7.5. Should an individual who as a named entrant entered National Championships change county during the close season, they may request written approval from Bowls England via their County Association for their National Championship entries to be transferred to somebody else as per 50.1.7.3 or removed to allow their participation in future matches that season under the jurisdiction of Bowls England.

## **2. Match Arrangements**

- 2.1. All County Championships leading to National Finals, unless mutually agreed, must be played on either:
  - 2.1.1. Weekdays - start time no earlier than 6 p.m. or later than 6.30 p.m.
  - 2.1.2. Weekends - start time no earlier than 9.30 a.m. or later than 6.30 p.m.
  - 2.1.3. If a player/team fails to be ready within 30 minutes of the start time (Sanction I applies).
  - 2.1.4. Players and Officials selected for International Duties, must be accommodated in all stages of National Championships (Sanction G applies).
- 2.2. Suitable flood lighting may be used during any round.
- 2.3. The playing surface must be either vegetation (grass) or a synthetic surface as per the Laws of the Sport (Law 46.4). It is a condition that National Competitions are played outdoors and that the green has been approved by the relevant County Association. Fixed groundsheets are acceptable for National Championships, however portable/moveable groundsheets are prohibited.
- 2.4. Players who have been drawn to play at a club that they have either been expelled or suspended from, should either be allowed to access the changing room and green in order to play the game or alternatively the challenger should make arrangements to play at a neutral venue affiliated to Bowls England. The neutral venue should not be any additional mileage from that of the original club.
- 2.5. The draw for rink/s to be played on shall be made in accordance with the current Laws of the Sport, please refer to Appendix K for guidance (Sanction J applies).
- 2.6. In the event of game stoppages in all Championships, the match must be played to a finish as per the Laws of the Sport of Bowls, Law 33 applies. If necessary future rounds must be realigned to accommodate. Please refer to Appendix J.



2.7. In team games, the players that competing in the first round will constitute the team. One additional, and the same player, may be used as a provided they have not already played or entered in the same Championship. They may play in any position (Sanction B applies). If a substitute is required during a game then the rules in the current Laws of the Sport of Bowls (Law 32) applies.

2.8. For dress code please refer to Appendix A1.

### **3. Qualifiers for National Finals**

3.1. Every County Association shall be entitled to at least one representative in each Championship discipline. The representative details must be forwarded to Bowls England no later than the Monday of week number 32.

3.2. In order to avoid possible duplications at the National Finals, through competitors qualifying in more than one National Championship event, the County Association must allocate representatives accordingly. Bowls England reserves the right to change representatives if they are incorrectly allocated following submission.

## **Regulation 51: National Championships (Final Stages)**

### **1. General**

- 1.1. The final stages of the National Finals will be played under the current [Laws of the Sport of Bowls](#) and in accordance with these regulations.
- 1.2. Competitors must adhere to the Code of Conduct for National Finals (Appendix C).
- 1.3. The Tournament Director shall determine any questions or disputes that may arise, that do not come within the scope of the umpires duties. The decision of the Tournament Director shall be final and binding.
- 1.4. The Tournament Director reserves the right to alter starting times and rinks if it is considered necessary or desirable.
- 1.5. The Tournament Director, in consultation with the Greenkeeper, shall be the adjudicators as to whether or not the green is fit for play and shall have the power to postpone play at any point. Should play be postponed the current Laws of the Sport of Bowls shall apply.
- 1.6. At the National Finals all bowls shall bear the world bowls stamp in accordance with the current [Laws of the Sport of Bowls \(Law 53\)](#). (Sanction L applies) See Appendix E for clarification.

### **2. Arrangements for Play**

- 2.1. Skips/singles players shall collect their scorecards and/or stickers from the Tournament Office before each round and register all substitutes shall be registered with the Tournament Office.
- 2.2. Parental consent forms (where applicable) shall be completed and submitted.
- 2.3. Competitors must be on the green ready to play within 15 minutes of the agreed start time (Sanction M applies)
- 2.4. Competitors shall adhere to the Bowls England Slow Play Guidance (Sanction N applies)
- 2.5. Matches must be conceded where it is not possible for the losing team/individual to win as per the Laws of the Sport of Bowls (Law 26.3).
- 2.6. After the end of each match the winning skip (or player in Singles) shall take the signed scorecard/s to the Tournament Office immediately. Failure to do so may lead to disqualification (Sanction O applies)
- 2.7. For dress code please refer to Appendix A2.



### **3. Trophy Presentation**

- 3.1. At the conclusion of all Finals, a trophy presentation to both finalists shall take place on the green (Sanction P applies)
- 3.2. The Winners of the Singles (Four-Bowl), Junior Singles, Junior Pairs (Women Only), Pairs, Triples, Fours and Senior Fours shall represent England in the British Isles Championships the following year.

## **Regulation 52: National Competitions**

### **1. General**

- 1.1. All National Competitions shall be administered by Bowls England, in accordance with the Bowls England Rules and Regulations set out in this document, and in accordance with the current [Laws of the Sport of Bowls](#).
- 1.2. National Competitions are only open to members of clubs affiliated to Bowls England (Sanction B applies).
- 1.3. Should a club cease to exist after the entry date, affiliated members are permitted, for one season only, to compete under the name of that club irrespective of which club or clubs they have joined. In addition, the club Singles Champion shall be eligible to enter the Champion of Champions.

### **2. Inter-County Competitions**

- 2.1. Inter-County Competitions consist of
  - 2.1.1 Johns Trophy
  - 2.1.2 Walker Cup
  - 2.1.3 Amy Rose Bowl
  - 2.1.4 Middleton Cup
  - 2.1.5 Balcomb Trophy
  - 2.1.6 White Rose
- 2.2 Players must not enter any Bowls England Inter-County Competitions under an assumed name, or allow their name to be submitted by more than one county/country in any one year. Players must represent the County in which they have entered the National Championships and must not enter National Championships in another Country (Sanction D applies).

### **3 Inter-Club Competitions**

- 3.1 Inter-Club Competitions consist of
  - 3.1.1 Men's Top Club
  - 3.1.2 Women's Top Club
  - 3.1.3 Club Two Fours
  - 3.1.4 Tony Allcock Trophy
- 3.2 Players must not enter any Bowls England Inter-Club Competitions under an assumed name, or allow their name to be submitted by more than one club/country/country in any one year. Players must represent the Club in which they have entered the National Championships and must not enter National Championships in another Country (Sanction D applies).





## **4 National Competitions**

4.1 National Competitions consist of:

- 4.1.1 Family Pairs
- 4.1.2 Champion of Champions
- 4.1.3 Senior Singles
- 4.1.4 Senior Pairs
- 4.1.5 Mixed Pairs
- 4.1.6 Mixed Fours

4.2 Players must not enter any Bowls England National Competitions under an assumed name, or allow their name to be submitted by more than one team in any one year. Players must not enter National Championships in another Country (Sanction B applies).

4.3 Entries must be made by one named entrant only. Named entrants are excluded from being a substitute in the same discipline, even when a walkover in the first round has taken place (Sanction B applies).

## **5 Match Arrangements – in all qualification rounds, excluding regional finals**

5.1 The draw and completion dates for all National Competitions shall be made by Bowls England. Each County shall decide if the National Competition area shall be played on a County or Open basis as deemed applicable. Area draws shall be based upon the entry figures from the current year. The format of rules for the individual Competitions shall be found under the corresponding regulation.

5.2 In all qualification rounds, the Challenger shall be responsible for the match arrangements and should be responsible for the payment of rink fees (where applicable), except when matches take place at a neutral venue when all costs shall be shared by both participants/teams/sides.

### **5.3 Match Location**

5.3.1 Matches shall be played on any affiliated green chosen by the challenger within the area of the particular competition.

5.3.2 If the mileage exceeds 160 miles round trip (club to club for club-based events and county centre to match venue for county-based events via the shortest route on google maps) matches must be played on a neutral green arranged by the challenger.

5.3.3 All rounds in the final stages prior to the national finals shall be played on a neutral green arranged by the challenger. All area finals in Senior Singles & Pairs shall be played on a neutral green (unless mutually agreed).

5.3.4 Players who have been drawn to play at a club that they have either been expelled or suspended from, should either be allowed to access the changing room and green in order to play the game or alternatively the

challenger should make arrangements to play at a neutral venue affiliated to Bowls England.

- 5.3.5 Neutral Greens should be approximately midway between the two clubs/counties unless mutually agreed.
- 5.3.6 The use of the same neutral green in future rounds is permissible.
- 5.3.7 Suitable flood lighting may be used during any round. The playing surface must be either vegetation (grass) or a synthetic surface as per the Laws of the Sport (Law 46.4). It is a condition that National Competitions are played outdoors and that the green has been approved by the relevant County Association. Fixed groundsheets are acceptable, however portable/moveable groundsheets are prohibited.

#### **5.4 Offering of dates**

- 5.4.1 For an opening match in the round, the Challenger must offer their opponent, within 21 days of the closing date of the first round, three dates of play (Sanction F). When either a challenger or opponent of the tie is competing in an earlier round and the awaiting opposition has a bye to the next round then rule 5.4.2 will apply.
- 5.4.2 For all subsequent rounds, the Challenger must offer their opponent, within 24 hours after the closing date of the previous round, three dates of play. The three dates offered must fall within the window of the round (Sanction E).
- 5.4.3 Failure to offer eligible dates (challenger) – Opponent becomes ‘challenger’ and must make all match arrangements within 48 hours of the previous round (Sanction E)
- 5.4.4 Matches may be played prior to the closing date of the previous round only by mutual agreement.
- 5.4.5 A minimum of 48 hours’ notice is required for any dates offered to be eligible.
- 5.4.6 The offering of two different start times on a single date does not count as two dates.
- 5.4.7 One of the dates offered must be a Saturday or Sunday.
- 5.4.8 The start time for any match shall be set by the Challenger when the dates are offered and, unless mutually agreed, must be played on either:
  - (1) Weekdays - start time no earlier than 6pm or later than 6.30pm
  - (2) Weekends - start time no earlier than 9.30am or later than 6.30pm

If a player/team fails to be ready to play within 30 minutes of the agreed start time Sanction I applies.

5.4.9 The opponent must accept a date for play no later than 72 hours after the close of the previous round (Sanction E applies). For a first match - 18 days prior to the close of the round applies (Sanction F applies).

5.4.10 No extension of the closing date for any round shall be granted for any reason whatsoever.

## **5.5 General Matters**

5.5.1 The draw for rink/s to be played on shall be made in accordance with the current Laws of the Sport, please refer to Appendix K for guidance (Sanction J applies).

5.5.2 For dress code please refer to Appendix B1 & B2. If not adhered to Sanction K applies.

5.5.3 For Inclement Weather refer to Appendix J.

5.5.4 Regional Finals, where required, shall be played at venues selected by Bowls England. Players shall be informed of the venues and details by Bowls England.

## **5.6 Result Submission**

5.6.1 The result shall be submitted by the winning player or team/side to Bowls England immediately using one of the approved notification methods.

## **5.7 National Finals**

5.7.1 Competitors must adhere to the Code of Conduct for National Finals (Appendix C).

5.7.2 Competitors shall adhere to the Bowls England Slow Play Guidance (Sanction N applies)

5.7.3 Please refer to the specific event for further information

## **Regulation 53: Inter-County Championship (Womens - Johns Trophy) & (Mens - Middleton Cup)**

**This regulation should be read in conjunction with Regulation 52 – National Competitions.**

### **1 General**

- 1.1 This competition is restricted to one side per county open to all County Associations who are Members of Bowls England.
- 1.2 Each County Association shall forward to Bowls England, the entries in each of the Inter-County Competitions together with the relevant entry fees.
- 1.3 Each County shall be represented by a side consisting of six rinks of four players, all of whom shall be members of an affiliated club to their County Association. No player shall play for more than one county in any one year. Players entering National Championships in another country are not eligible to participate. (Sanction D applies).
- 1.4 Failure to field 24 players shall result in a walkover (Sanction I applies).
- 1.5 All matches shall start at 2pm unless mutually agreed. The last round of group games within the same group, (excluding dead rubbers), shall start at the same time (2pm unless mutually agreed between all competing counties).
- 1.6 In matches up to and including the quarter-finals, the participating counties shall arrange for fixtures to be played either:
  - At a venue in one of the two counties (home team to arrange umpire);
  - On a 3 rink home/3 rink away basis (each county to arrange umpire)
  - At a neutral venue midway between the two counties (two counties to mutually arrange and pay costs accordingly);
- 1.7 Bowls Stickers - Counties shall provide bowls stickers in all rounds up to and including the Quarter-Finals unless provided by the sponsor
- 1.8 If a bowl displacement occurs refer to Appendix L (Sanction Q applies).

### **2 Group Stages**

- 2.1 Teams will be divided into eight groups as drawn by Bowls England in accordance with the regional groups, each group played as a round robin league, each group winner shall progress to the quarter-finals. Thereafter is played to a knockout format. Each rink shall play 21 ends, two bowls each player.
- 2.2. 22 points are available for each match in the group stages – 2 points for a rink win and 10 points for the team with the highest aggregate score. In an event of a tie on shots 5 points will be awarded to each team.

- 2.3. Should a match end as a tie (both shots and points) after 21 ends then an extra end or ends shall be played by all six rinks simultaneously until there is a winner. The total number of shots on all six rinks shall count on the extra end and the winning team reported to Bowls England. **The extra end shall not form part of the score within the group stages**, but shall ONLY be used to separate the two counties if they are level at the conclusion of the group stages after points and shots difference have been taken into account.
- 2.4. Where a county is unable or refuses to fulfil a fixture match in the group stages their opponents will be awarded the tie 22-0 and 30 shots. If both counties agree not to fulfil a fixture (dead rubber) no points or shots will be awarded to either side.
- 2.5. The county gaining the greatest number of points in each group shall be declared the winner of that section. Should two counties be equal in points and also in shot difference then the winner shall be ascertained on the result of the match already played between the two counties.
- 2.6. Before the start of the match, the nominated managers shall toss a coin for the choice of jack (first end), the winner having the choice of keeping or giving the jack away.

### **3 Quarter-Finals**

- 3.1. The two counties concerned shall be responsible for arranging an Umpire (via the Regional Officer of the English Bowls Umpires Association). If green fees are payable these shall be shared by both counties.
- 3.2. Before the start of the match, the nominated managers shall toss a coin for the choice of jack (first end), the winner having the choice of keeping or giving the jack away. Then a further toss of a coin for choice of jack (extra end) should one be needed. The winner has the option to make the choice immediately after the 21<sup>st</sup> end has been played. The winner shall be decided on the total number of shots of all rinks. There are no points for individual rink wins. In the event of a tie after 21 ends then an extra end or ends shall be played by all six rinks simultaneously until there is a winner. The total number of shots on all six rinks shall count on the extra end.

### **4 Final Stages**

- 4.1 Each county qualifying for the Semi-Final stage shall supply to Bowls England the names of six rinks and four reserves upon request. The Semi-Final and Final shall be played during the National Finals.
- 4.2 Bowls England shall provide bowls stickers for the Semi-Finals and Final.
- 4.3 The Winner and Runner-Up respectively shall receive a maximum of 28 Winners/Runners-Up medals.

## **Regulation 54: Inter-County Double Rink Competition (Womens – Walker Cup) & (Mens – Balcomb Trophy)**

**This regulation should be read in conjunction with Regulation 52 – National Competitions.**

### **1 General**

- 1.1 This competition shall be open to all County Associations who are Members of Bowls England.
- 1.2 Each County Association shall forward to Bowls England, the entries in each of the Inter-County Competitions together with the relevant entry fees as determined by Bowls England.
- 1.3 Every county shall be represented by a side consisting of two rinks of four players, all of whom shall be members of an affiliated club to their County Association. No player shall play for more than one county in any one year. Players entering National Championships in another country are not eligible to participate (Sanction D applies).
- 1.4 Bowls England shall set play-by dates for all rounds. The draw for the competition including the Regional Final and Semi-Final shall be made by Bowls England.
- 1.5 Failure to field eight players shall result in a walkover (Sanction I applies).
- 1.6 The competition shall be played on a knockout basis, with the early rounds in geographical areas. Each rink of a side shall play 21 ends, two bowls each player. The County Secretary or Challenging side shall make all match arrangements. Matches shall start at 1.30pm unless mutually agreed. Arrangements for cost of refreshments and other incidental expenses shall be a domestic matter.
- 1.7 The match shall consist of 21 ends. Before the start of the match, the nominated managers shall toss a coin for choice of jack (first end), the winner having the choice of keeping or giving the jack away. Then toss a coin to nominate which rink shall play the extra end. The winner to nominate the name of the skip to play the extra end should one be required. This shall be declared prior to the match commencing. A further toss of a coin for choice of jack (extra end) should one be required. The winner has the option to make the choice immediately after the 21<sup>st</sup> end has been played. The number of shots on both rinks shall determine the result. In the event of a tie after 21 ends then an extra end shall be played by the nominated rink to determine the overall winner.
- 1.8 Counties shall inform the Regional Selector of time and venue of preliminary/first round matches. Counties shall provide bowls stickers for the preliminary round and first round unless provided by the sponsor.
- 1.9 If a bowl displacement occurs refer to Appendix L (Sanction Q applies).



## **2. Final Stages**

- 2.1 The final stages consisting of the Regional Finals, Semi-Finals and the Final shall be played on a knockout basis at a time, date and venue set by Bowls England. Bowls England shall make the draw for the Regional Finals, Semi-Finals and Final.
- 2.2 Each county qualifying for the Semi-Final stage shall supply to Bowls England the names of two rinks and two reserves upon request. The Semi-Final and Final shall be played during the National Finals. A maximum of 10 National Competition participation badges shall be presented to players involved at the National Championships.
- 2.3 Bowls England shall provide bowls stickers for the Semi-Finals and Final of this event.
- 2.4 The Winner and Runner-Up respectively shall receive a maximum of 10 Winners medals.



## **Regulation 55: Inter-County Junior Double Rink Competition (Women - Amy Rose Bowl) & (Men – White Rose Trophy)**

**This regulation should be read in conjunction with Regulation 52 – National Competitions.**

### **1 General**

- 1.1 The competition shall be open to all County Associations who are members of Bowls England.
- 1.2 **Amy Rose Bowl:**  
Each county may enter more than one side and shall be represented by a side/sides consisting of two rinks of four players. All players shall be members of clubs affiliated to their County Association and 31 years of age or under by 1st April in the year of the competition. Players entering National Championships in another country are not eligible to participate (Sanction D applies).
- 1.3 **White Rose Bowl**  
Each county may enter one side only consisting of two rinks of four players. All players shall be members of clubs affiliated to their County Association and under 25 years of age on the 1st April in the year of the competition. Players entering National Championships in another country are not eligible to participate. (Sanction D applies)
- 1.4 The Competition shall be played on a knockout basis.
- 1.5 Each county Association shall forward to Bowls England, the entries in each of the Inter-County Competitions together with the relevant entry fees as determined by Bowls England.
- 1.6 Failure to field eight players (in any single team) shall result in a walkover. (Sanction I applies)
- 1.7 A player under the age of 12 years on the 1st April in the year of the competition may be substituted after a minimum of ten ends have been played.
- 1.8 Junior/Cub bowls may be used.
- 1.9 Each rink shall play 21 ends, two bowls each player. Before the start of the match, the nominated managers shall toss a coin for choice of jack (first end), the winner having the choice of keeping or giving the jack away. Then toss a coin to nominate which rink shall play the extra end. The winner to nominate the name of the skip to play the extra end. This shall be declared prior to the match commencing. A further toss of a coin for choice of jack (extra end) should one be required. The winner has the option to make the choice immediately after the 21<sup>st</sup> end has been played. The total number of shots on both rinks shall determine the





winner. In the event of a tie after 21 ends then an extra end shall be played by the nominated rink to determine the overall winner.

- 1.10. Counties shall inform the Regional Selector of time and venue of preliminary/first round matches. Counties shall provide bowls stickers for the preliminary round and first round unless provided by the sponsor.
- 1.11 If a bowl displacement occurs refer to Appendix L (Sanction Q applies).

## **2 Final Stages**

- 2.1 The final stages consisting of the Regional Finals, Semi-Finals and the Final shall be played on a knockout basis at a time, date and venue set by Bowls England. Bowls England shall make the draw for the Regional Finals, Semi-Finals and Final.
- 2.2 Each county qualifying for the Semi-Final stage shall supply to Bowls England the names of two rinks and two reserves upon request. The Semi-Final and Final shall be played during the National Finals. A maximum of 10 National Competition participation badges shall be presented to players involved at the National Championships.
- 2.3 Bowls England shall provide bowls stickers for the Semi-Finals and Final of this event.
- 2.4 The Winner and Runner-Up respectively shall receive a maximum of 10 Winners medals.

## **Regulation 56: National Top Club Competition (Women)**

**This regulation should be read in conjunction with Regulation 52 – National Competitions.**

### **1 General**

- 1.1 The competition shall be open to all Clubs affiliated to Bowls England. Clubs may enter more than one side. No player shall play in more than one of those sides entered (Sanction D applies).
- 1.2 Players are required to play from the club in which they play their National Championships. Players entering National Championships in another country are not eligible to participate. In any year a competitor selected to play in Inter-Club Competitions may only represent one club should they belong to more than one club. (Sanction D applies)
- 1.3 Fixed dates may be set by County Associations subject to the following:
  - Both clubs participating in the round are affiliated to the same County Association
  - The dates for each round set by the County Association shall fall within the round closing dates for that particular round set by Bowls England
  - The set date meets the requirement of the playing times/days specified in Regulation 52.5.4.8
- 1.4 A club side shall consist of 10 players. The disciplines are Four- Bowl Singles (21 shots), Four-Bowl Pairs (18 ends), Three-Bowl Triples (18 ends) and Two- Bowl Fours (18 ends). The challenger shall have the choice of green and shall make all match arrangements.
- 1.5 Failure to field 10 players shall result in a walk-over (Sanction I applies).
- 1.6 Before the start of the match, the nominated managers shall toss a coin for the choice of jack (first end), the winner having the choice of keeping or giving the jack away, and make the draw for rinks for each discipline. The format for the competition shall be as follows:
  - 1pt for every discipline won, total of four points available. In the event of a drawn discipline the point shall be shared, i.e. ½ point each. After completion of the four disciplines the winning side shall be decided by the highest number of points.
  - In the case of a tie, the winner shall be decided from the total number of shots scored from the four disciplines. Should these be equal as well as the match score, extra ends in the pairs, triples and fours, shall be played to determine the result. A further toss of the coin shall take place, the winner having the choice of keeping or giving the jack away on the extra ends.



- Shots do not count on the extra end – only the result of the three disciplines, i.e. 2-1, 3-0. All disciplines shall be played simultaneously.
- In singles, no shots above 21 will count towards the aggregate score.

1.7 Between rounds, substitutes/changes are allowed in the side and between disciplines provided the players are members of the same club and have not played for another side during the current competition (Sanction D applies). For this competition only, substitution during play is allowed for the singles player in case of illness or injury. The score being resumed after interruption. Substitutes are allowed during play in the Pairs, Triples and Fours of this event in line with the current Laws of the Sport.

1.8 If a bowl displacement occurs refer to Appendix L (Sanction Q applies).

## **2 Final Stages**

2.1 The Quarter Finals, Semi-Finals and Final consisting of the last eight teams shall compete at the National Finals on a knockout basis at a time set by Bowls England. The draw shall be made by Bowls England.

2.2 Each Club qualifying for the National Finals shall supply Bowls England the names of the ten players and two reserves upon request. A maximum of 12 National Competition participation badges shall be presented to players involved at the finals.

2.3 Bowls England shall provide bowls stickers for the final stages of this event.

2.4 The Winners shall be presented with a maximum of 12 medals, fleeces and a Club Pennant along with 12 medals for the Runners-Up.

## **Regulation 57: National Top Club Competition (Men)**

**This regulation should be read in conjunction with Regulation 52 – National Competitions.**

### **1 General**

- 1.1 The competition shall be open to all Clubs affiliated to Bowls England. Clubs may enter more than one side. No player shall play in more than one of those sides entered (Sanction D applies).
- 1.2 Players are required to play from the club in which they play their National Championships. Players entering National Championships in another country are not eligible to participate. In any year a competitor selected to play in Inter-Club Competitions may only represent one club should they belong to more than one club (Sanction D applies).
- 1.3 Fixed dates may be set by County Associations subject to the following:
  - Both clubs participating in the round are affiliated to the same County Association
  - The dates for each round set by the County Association shall fall within the round closing dates for that particular round set by Bowls England
  - The set date meets the requirement of the playing times/days specified in Regulation 52.5.4.8
- 1.4 A club side shall consist of 11 players. The disciplines are Two- Bowl Singles (21 ends), Four- Bowl Singles (21 shots), Four-Bowl Pairs (18 ends), Three-Bowl Triples (18 ends) and Two- Bowl Fours (18 ends). The challenger shall have the choice of green and shall make all match arrangements up to the inter-area stage.
- 1.5 Failure to field 11 players shall result in a walk-over (Sanction I applies).
- 1.6 Before the start of the match, the nominated managers shall toss a coin for the choice of jack (first end), the winner having the choice of keeping or giving the jack away, a further toss of a coin for choice of jack (extra end) should one be required and make the draw for rinks for each discipline. All disciplines shall start at the same time unless, when arranging the fixture, it is agreed that the singles matches shall be played on the same rink one after the other. An extra end shall be played in any discipline should it be a tie – no drawn matches. 1pt for every discipline won, total of five points available, the winning side shall be the one winning the most disciplines.
- 1.7 If, in any round of this competition, a singles player is unable to continue due to ill health or any other reason, then that discipline shall be conceded. The remaining disciplines should continue to their natural conclusion. Substitutes are



allowed during play in the Pairs, Triples and Fours of this event in line with the current Laws of the Sport (Law 33).

- 1.8 Between rounds, substitutes/changes are allowed in the side and between disciplines provided the players are members of the same club and have not played for another side during the current competition (Sanction B applies).
- 1.9 If a bowl displacement occurs refer to Appendix L (Sanction Q applies).

## **2 Final Stages**

- 2.1 The Quarter Finals, Semi-Finals and Final consisting of the last eight teams shall compete at the National Finals on a knockout basis at a time set by Bowls England. The draw shall be made by Bowls England.
- 2.2 Each Club qualifying for the National Finals shall supply Bowls England the names of the eleven players and two reserves upon request. A maximum of 13 National Competition participation badges shall be presented to players involved at the finals.
- 2.3 Bowls England shall provide bowls stickers for the final stages of this event.
- 2.4 The Winners shall be presented with a maximum of 13 medals, fleeces and a Club Pennant along with 13 medals for the Runners-Up.

## **Regulation 58: National Club Two Fours Competition (Men)**

**This regulation should be read in conjunction with Regulation 52 – National Competitions.**

### **1 General**

- 1.1 The competition shall be open to all Clubs affiliated to Bowls England. Clubs may enter more than one side. No player shall play in more than one of those sides entered (Sanction D applies).
- 1.2 Players are required to play from the club in which they play their National Championships. Players entering National Championships in another country are not eligible to participate. In any year a competitor selected to play in Inter-Club Competitions may only represent one club should they belong to more than one club (Sanction D applies).
- 1.3 Fixed dates may be set by County Associations subject to the following:
  - Both clubs participating in the round are affiliated to the same County Association
  - The dates for each round set by the County Association shall fall within the round closing dates for that particular round set by Bowls England
  - The set date meets the requirement of the playing times/days specified in Regulation 52.5.2.6
- 1.4 A club side shall consist of two rinks of four players and they shall play 18 ends, two bowls each player. The challenger shall have the choice of green and shall make all match arrangements.
- 1.5 Failure to field eight players shall result in a walkover (Sanction I applies).
- 1.6 Before the start of the match, the nominated managers shall toss a coin for choice of jack (first end), the winner having the choice of keeping or giving the jack away. Then toss a coin to nominate which rink shall play the extra end. The winner to nominate the name of the skip to play the extra end. This shall be declared prior to the match commencing. A further toss of a coin for choice of jack (extra end) should one be required. The winner has the option to make the choice immediately after the 18th end has been played. The total number of shots on both rinks shall determine the winner. In the event of a tie after 18 ends on each rink then an extra end shall be played by the nominated rink to determine the overall winner.
- 1.7 Between rounds, substitutes/changes are allowed in the side and between disciplines provided the players are members of the same club and have not played for another side during the current competition (Sanction B applies).
- 1.8 If a bowl displacement occurs refer to Appendix L (Sanction Q applies).



## **2 Final Stages**

- 2.1 The National finals consisting of the Quarter-Finals, Semi-Finals and the Final shall be played on a knockout basis at a time set by Bowls England. The draw for the Quarter-Finals, Semi-Finals and Final shall be made by Bowls England.
- 2.2 The Quarter-Final, Semi-Final and Final shall be played at a date and venue set by Bowls England. A maximum of 10 National Competition participation badges shall be presented to players involved.
- 2.3 Each club qualifying for the Quarter-Final stage shall supply to Bowls England the names of the two rinks and two reserves upon request.
- 2.4 Bowls England shall provide bowls stickers for the Semi-Finals and Final.
- 2.5 The Winners shall receive a maximum of 10 Winners medals, fleeces and a Club Pennant with the Runners-Up receiving a maximum of 10 medals.

## **Regulation 59: Tony Allcock Trophy National Club Mixed Over 60s Double Rink Competition**

**This regulation should be read in conjunction with Regulation 52 – National Competitions.**

### **1 General**

- 1.1 The competition shall be open to all Clubs affiliated to Bowls England. Clubs may enter more than one side. No player shall play in more than one of those sides entered (Sanction D applies).
- 1.2 All players shall be aged 60 years or over on April 1st in the year of the competition (Sanction D applies).
- 1.3 Players are required to play from the club in which they play their National Championships. Players entering National Championships in another country are not eligible to participate. In any year a competitor selected to play in Inter-Club Competitions may only represent one club should they belong to more than one club (Sanction D applies).
- 1.4 Fixed dates may be set by County Associations subject to the following:
  - Both clubs participating in the round are affiliated to the same County Association
  - The dates for each round set by the County Association shall fall within the round closing dates for that particular round set by Bowls England
  - The set date meets the requirement of the playing times/days specified in Regulation 52.5.2.6
- 1.5 A club side shall consist of two rinks of four players from its membership in accordance with the National Competition regulations (two men and two women per rink) and they shall play 18 ends, two bowls each player. The challenger shall have the choice of green and shall make all match arrangements.
- 1.6 Failure to field eight players shall result in a walk-over (Sanction I applies).
- 1.7 Before the start of the match, the nominated managers shall toss a coin for choice of jack (first end), the winner having the choice of keeping or giving the jack away. Then toss a coin to nominate which rink shall play the extra end. The winner to nominate the name of the skip to play the extra end. This shall be declared prior to the match commencing. A further toss of a coin for choice of jack (extra end) should one be required. The winner has the option to make the choice immediately after the 18th end has been played. The total number of shots on both rinks shall determine the winner. In the event of a tie after 18 ends then an extra end shall be played by the nominated rink to determine the overall winner.





1.8 Between rounds, substitutes/changes are allowed in the side and between disciplines provided the players are members of the same club and have not played for another side during the current competition (Sanction B applies).

1.9 If a bowl displacement occurs refer to Appendix L (Sanction Q applies)

## **2 Final Stages**

2.1 The National finals consisting of the Quarter-Finals, Semi-Finals and the Final shall be played on a knockout basis at a time set by Bowls England. The draw for the Quarter-Finals, Semi-Finals and Final shall be made by Bowls England.

2.2 The Quarter-Final, Semi-Final and Final shall be played at a date and venue set by Bowls England. A maximum of 10 National Competition participation badges shall be presented to players involved.

2.3 Each club qualifying for the Quarter-Final stage shall supply to Bowls England the names of the two rinks and two reserves upon request.

2.4 Bowls England shall provide bowls stickers for the Semi-Finals and Final.

2.5 The Winners shall receive a maximum of 10 Winners medals, fleeces and a Club Pennant with the Runners-Up receiving a maximum of 10 medals.

## **Regulation 60: National Senior Singles**

**This regulation should be read in conjunction with Regulation 52 – National Competitions.**

### **1 General**

- 1.1 The competition shall be open to all members of clubs affiliated to Bowls England.
- 1.2 Each player shall have reached their 55th birthday by 1st April in the year of the competition. (Sanction B applies)
- 1.3 Players shall play from the same county in which they play their National Championships. Players entering National Championships in another country are eligible to participate. (Sanction B applies)
- 1.4 Senior Singles matches shall be 21 shots (four bowls each player).
- 1.5 All Area finals must be played on a neutral green as near half way between the two clubs as possible unless otherwise mutually agreed.

### **2 Final Stages**

- 2.1 The last 32 shall compete at the National finals on a knockout basis at a time set by Bowls England. The draw shall be made by Bowls England.
- 2.2 All players involved at the National Finals shall receive a National Competition participation badge.
- 2.3 Bowls England shall provide bowls stickers for the final stages of this event
- 2.4 The Winners shall be presented with a medal and fleece for the singles or two medals and two fleeces for the pairs with one or two medals respectively for the Runners-Up.

## **Regulation 61: National Senior Pairs Competition**

**This regulation should be read in conjunction with Regulation 52 – National Competitions.**

### **1 General**

- 1.1 The competition shall be open to all members of clubs affiliated to Bowls England.
- 1.2 Each player shall have reached their 55th birthday by 1st April in the year of the competition. (Sanction B applies)
- 1.3 The two players in the Senior Pairs shall be members of an affiliated club within the same county. (Sanction B applies)
- 1.4 Players shall play from the same county in which they play their National Championships. Players entering National Championships in another country are eligible to participate. (Sanction B applies)
- 1.5 Senior Pairs shall be 18 ends (three bowls each player). In the event of the scores being equal when all ends have been played an extra end or ends shall be played until a decision is reached.
- 1.6 In the event of a substitute being required, one and the same player may come from any club, in the same county, providing they have not already played in the same competition, however, one of the original players shall play in all rounds. The substitute may play in any position. (Sanction H applies)
- 1.7 All Area finals must be played on a neutral green as near half way between the two clubs as possible unless otherwise mutually agreed.

### **2 Final Stages**

- 2.1 The last 32 shall compete at the National finals on a knockout basis at a time set by Bowls England. The draw shall be made by Bowls England.
- 2.2 Each Team qualifying for the National Finals final stage shall supply to Bowls England the name of their partner upon request. The players involved at the National Finals shall receive a National Competition participation badge.
- 2.3 Bowls England shall provide bowls stickers for the final stages of this event
- 2.4 The Winners shall be presented with a medal and fleece for the singles or two medals and two fleeces for the pairs with one or two medals respectively for the Runners-Up.

## **Regulation 62: National Champion of Champions Singles Competition**

**This regulation should be read in conjunction with Regulation 52 – National Competitions.**

### **1 General**

- 1.1 The competition shall be open to all clubs affiliated to Bowls England.
- 1.2 Players must have qualified through one of the Bowls England qualifying events (listed below). Players entering National Championships in another country are eligible to participate.

Players eligible to enter are as follows:

- Club Four-Bowl Singles Champion
- County Four-Wood Singles Champion
- County Junior Four-Wood Singles Champion
- Area National Senior Singles Qualifier from the previous year

In addition the Champions of the following events from the previous year have automatic entry from Bowls England:

- National Champion of Champions
- National Four-Wood Singles Champion
- National Junior Four-Wood Singles Champion
- National Senior Singles Champion

Sanction B applies for any entrants who do not meet the eligibility criteria above.

In the event of any one person qualifying in more than one of the aforementioned, only one entry shall be accepted.

- 1.3 Players who have moved clubs/county during the close season shall still be eligible to enter the Champion of Champions providing that Bowls England receives written approval from the Club or County Secretary where they secured qualification no later than 1st March 2023 (Sanction C applies). Entrants will then be placed by Bowls England into their respective area of the club where they are playing National Championships in 2023.
- 1.4 Each match shall be 21 shots, four bowls each player.

### **2 Final Stages**

- 2.1 The last 16 shall compete at the National finals on a knockout basis at a time set by Bowls England. The draw shall be made by Bowls England.
- 2.2 Each player involved in the National finals shall receive a National Competition participation badge.



- 2.3 Bowls England shall provide bowls stickers for the final stages of this event.
- 2.4 The Winner shall be presented with a medal and a fleece with a medal for the Runner-Up.

## **Regulation 63: National Mixed Pairs Competition**

**This regulation should be read in conjunction with Regulation 52 – National Competitions.**

### **1 General**

- 1.1 The competition shall be open to all members of clubs affiliated to Bowls England.
- 1.2 A team shall comprise of one man and one woman. Either player may skip.
- 1.3 Players shall play from the same county in which they play their National Championships, with the exception of those clubs affiliated to two counties due to historic geographic circumstances (Sanction B applies). Players entering National Championships in another country are eligible to participate.
- 1.4 Each match shall be 18 ends, three bowls each player. In the event of the scores being equal when all the ends have been played, an extra end or ends shall be played until a result is reached.

### **1.5 Substitution**

The two players taking part in the first match constitutes the original team and shall normally play together throughout the competition. One and the same male and/or one and the same female player may be used as a substitute at any time, providing that they have not already played or entered the same competition (Sanction H applies).

### **2 Final Stages**

- 2.1 The last 16 shall compete at the National finals on a knockout basis at a time set by Bowls England. The draw shall be made by Bowls England.
- 2.2 Each Team qualifying for the final stages shall supply to Bowls England the name of each player upon request. The players involved in the National finals shall receive a National Competition participation badge.
- 2.3 Bowls England shall provide bowls stickers for the final stages of this event.
- 2.4 The Winners shall be presented with two medals and two fleeces along with two medals for the Runners-Up.

## **Regulation 64: National Mixed Fours Competition**

**This regulation should be read in conjunction with Regulation 52 – National Competitions.**

### **1 General**

- 1.1 The competition shall be open to all members of clubs affiliated to Bowls England.
- 1.2 A team shall comprise of two men and two women. Any player may skip.
- 1.3 Players shall play from the same county in which they play their National Championships, with the exception of those clubs affiliated to two counties due to historic geographic circumstances (Sanction B applies). Players entering National Championships in another country are eligible to participate.
- 1.4 Each match shall be 18 ends, two bowls each player. In the event of the scores being equal when all the ends have been played, an extra end or ends shall be played until a result is reached.

### **1.5 Substitution**

The four players taking part in the first match constitutes the original team and shall normally play together throughout the competition. One and the same male and/or one and the same female player may be used as a substitute at any time, providing that they have not already played or entered the same competition (Sanction H applies).

### **2 Final Stages**

- 2.1 The last 16 shall compete at the National finals on a knockout basis at a time set by Bowls England. The draw shall be made by Bowls England.
- 2.2 Each Team qualifying for the final stages shall supply to Bowls England the names of their team players upon request. The players involved in the National Finals shall receive a National Competition participation badge.
- 2.3 Bowls England shall provide bowls stickers for the final stages of this event.
- 2.4 The Winners shall be presented with four medals and four fleeces along with four medals for the Runners-Up.

## **Regulation 65: National Family Pairs Competition**

**This regulation should be read in conjunction with Regulation 52 – National Competitions.**

### **1 General**

- 1.1 The competition shall be open to all playing members of clubs affiliated to Bowls England.
- 1.2 A team shall be comprised of two players. Either player may skip.
- 1.3 Players need not necessarily be members of the same club or county. Players entering National Championships in another country are eligible to participate.
- 1.4 Eligible players should be from one of the following pairings:
  - Grandmother and granddaughter/grandson
  - Grandfather and granddaughter/grandson
  - Mother and daughter/son
  - Father and daughter/son
  - Sister and sister/brother
  - Brother and brother/sister
  - Step relatives of the above are also eligible to play
  - Marriage
  - Civil Partnership
- 1.5 The following pairings are therefore not eligible:
  - In-laws

Sanction B applies to any entries that do not meet the eligibility criteria.
- 1.6 Relationship between players shall be declared on request.
- 1.7 **Substitution**

The two players taking part in the first match constitutes the original team and shall normally play together throughout the competition. At least one of the original pair shall play in every round. Substitutes shall come from one of the eligible listings and shall not have already played or entered the same competition. (Sanction H applies)
- 1.9 Each match shall be 18 ends, three bowls each player. In the event of the scores being equal when all the ends have been played, an extra end or ends shall be played until a result is reached.





## **2 Final Stages**

- 2.1 The Last 16, Quarter Finals, Semi-Finals and Final shall be played on a date set by Bowls England during the National Finals. The draw shall be made by Bowls England.
- 2.2 Each team qualifying for the final stages shall supply to Bowls England the name of their partner upon request. The players involved shall receive a National Competition participation badge.
- 2.3 Bowls England shall provide bowls stickers for the final stages of this event.
- 2.4 The Winners shall be presented with two medals and fleeces with two medals for the Runners-Up.

## Sanctions

Sanction Ref	Sanction
A	If entries are not received by the closing date, late entries will not be accepted.
B	Should a player (and their team/side where applicable) be found to be ineligible prior to the start of a match or within 24 hours of the conclusion of that match (in writing by email notification to Bowls England), their opponent in that round will be granted a walkover.  If more than 24 hours have elapsed since the conclusion of the match then the ineligible player (and their team/side where applicable) will be disqualified and their opponent in the next round will be granted a walkover.
C	<b>Champion of Champions</b> If written approval from the club/county official where qualification was secured is not received by Bowls England the offending player will be disqualified.
D	<b>Inter Club – Knockout Rounds</b> Any team found to have fielded an ineligible player will be disqualified – Sanction B applies. <b>Inter County – Knockout Rounds</b> Any team found to have fielded an ineligible player will be disqualified – Sanction B applies. <b>Inter County – Middleton and Johns Group Stages</b> Any team found to have fielded an ineligible player in any match will concede the match to their opponent (22 points and 30 shots).
E	<b>Offering of Dates</b> Dates to be offered within 24 hours of the previous round. Failure to offer eligible dates (challenger) – Opponent becomes ‘challenger’ and must make all match arrangements within 48 hours of the previous round. Failure to accept dates within 72 hours of the previous round (opponent) – Challenger may claim the game Failure to offer eligible dates having become challenger (opponent) – both parties disqualified Failure by both players/teams/sides to offer dates – both parties disqualified
F	<b>In an opening match,</b> If dates have not been offered by the named challenger 21 days in advance of the closing date of that round the opponent will become the challenger. Failure by both players/teams/sides to offer dates – both parties disqualified Failure to accept a date once 18 days prior to the closing date has passed the player/team/side who offered the dates will be awarded the match.
G	<b>International Duty</b> County association must accommodate

H	<p><b>Substitutions - Individual Competitions:</b> At least one player who participated in the opening match must play in all preceding rounds (mixed fours one of each gender applies). Any team that does not field a player who participated in the opening match in preceding rounds will be disqualified. Sanction B then applies.</p>
I	<p>If a player/team is not ready to play within 30 minutes after the agreed start time in any round, their opponent/team may claim a walkover. No walkover can be claimed once a game has started.</p>
J	<p>Should the Challenger not offer a draw for rinks then the Opponent may claim a walkover prior to the start of the match. Should the game commence then no walkover may be claimed.</p>
K	<p>If a player/side do not adhere to the dress code, they will receive a written warning from the competition administrator regarding future conduct in that event.</p> <p>The offending player/side will be disqualified and their opponent in the next round awarded a walkover should there be a further reported instance in the same event.</p>
L	<p>Any bowls that do not meet the requirements for that event may not be used. See Appendix E for detail.</p>
M	<p><b>National Finals:</b> If a player/team is not ready to play within 15 minutes after the agreed start time in any round, their opponent/team will be given a walkover. Should the game commence then no walkover may be claimed.</p>
N	<p><b>National Finals:</b> All players must abide by the Slow Play guidance. Failure to adhere will result in disqualification. See Appendix D for detail.</p>
O	<p><b>National Finals:</b> Failure for winning player/team to take signed scorecard/s to Tournament Office within 15 minutes of the end of the game will result in disqualification.</p>
P	<p><b>National Finals:</b> If a finalist does not attend the Trophy Presentation, all prize money will be donated to the EBA Charity Trust.</p>
Q	<p>Where that team is part of a Side game, only that team will forfeit the game, not the entire Side. Refer to Appendix L for details what the penalty will be:</p>

## Appendix A1

### Dress code: National Championships – Early Rounds / County Stages

Please note: All reference to white clothing should read 'predominately white'

### Above the Waist – Sanction K will apply if not adhered to

All members of the side or team shall wear the same colour above the waist

#### Playing Shirt:

- Club
- White Polo Top / Shirt
- Bowls England Licenced

#### Pullover/Gilet or Cardigan:

- Club
- White equivalent.

#### Jacket:

- Club
- White
- Bowls England Licenced

#### Waterproofs/Rainwear:

- White
- Club
- Bowls England licensed

#### Headgear:

- White
- Club
- Bowls England Licensed

### Footwear – Sanction K will apply if not adhered to

#### Shoes / Trainers:

- Flat soled ('heel-less') footwear no colour restrictions

#### Sandals

- Sandals shall not be permitted except in medical circumstances where a doctor's note has been provided.

In all of the above players governed by requirements of a specific ethnic culture shall be permitted to wear their traditional dress if they so desire.

## Appendix A1 (Cont.)

### Dress code: National Championships – Early Rounds / County Stages

Please note: All reference to white clothing should read 'predominately white'

### Below the Waist – Sanction K will apply if not adhered to

All members of the side or team shall wear the same colour below the waist

#### Trousers:

- Permitted Colours:  
Black, Grey, Maroon, Navy, White
- Club
- Bowls England Licensed
- Belt (if worn) to match
- No jeans permitted to be worn

#### Cropped Trousers/Culottes:

- Permitted Colours:  
Black, Grey, Maroon, Navy, White
- Club
- Bowls England Licensed
- Belt (if worn) to match
- No jeans permitted to be worn

#### Waterproofs/Rainwear:

- White
- Club
- Bowls England licensed

#### Shorts:

- Permitted Colours:  
Black, Grey, Maroon, Navy, White
- Club
- Bowls England Licensed
- Belt (if worn) to match
- No jeans permitted to be worn

#### Skirts:

- Permitted Colours:  
Black, Grey, Maroon, Navy, White
- Club
- Belt (if worn) to match
- No jeans permitted to be worn

In all of the above players governed by requirements of a specific ethnic culture shall be permitted to wear their traditional dress if they so desire.

## Appendix A2

### Dress code: National Championships – National Finals

Please note: All reference to white clothing should read 'predominately white'

### Above the Waist – Sanction K will apply if not adhered to

All members of the side or team shall wear the same colour above the waist

#### Playing Shirt:

- County

#### Jacket:

- County
- White
- Bowls England Licenced

#### Headgear:

- White
- County
- Bowls England Licenced

#### Pullover/Gilet or Cardigan:

- County
- White or equivalent.

#### Waterproofs/Rainwear:

- White
- County
- Bowls England Licenced

### Footwear – Sanction K will apply if not adhered to

#### Shoes / Trainers:

- Flat soled ('heel-less') footwear no colour restrictions

#### Sandals

- Sandals shall not be permitted except in medical circumstances where a doctor's note has been provided.

In all of the above players governed by requirements of a specific ethnic culture shall be permitted to wear their traditional dress if they so desire.

## Appendix A2 (Cont.)

### Dress code: National Championships – National Finals

Please note: All reference to white clothing should read 'predominately white'

### Below the Waist – Sanction K will apply if not adhered to

All members of the side or team shall wear the same colour below the waist

#### **Trousers:**

Permitted TBC

- County
- Bowls England Licensed
- White Belt (if worn) to match
- No jeans permitted to be worn

#### **Shorts:**

Permitted Colours: TBC

- County
- Bowls England Licensed
- Belt (if worn) to match
- No jeans permitted to be worn

#### **Cropped Trousers/Culottes:**

Permitted Colours: TBC

- County
- Bowls England Licensed
- Belt (if worn) to match
- No jeans permitted to be worn

#### **Skirts:**

Permitted Colours: TBC

- County
- Bowls England Licensed
- Belt (if worn) to match
- No jeans permitted to be worn

#### **Waterproofs/Rainwear:**

- White
- County
- Bowls England Licensed

In all of the above players governed by requirements of a specific ethnic culture shall be permitted to wear their traditional dress if they so desire.

## Appendix B1

### **Dress code: National Competitions – Qualifying Stages** (*Individual Competitions, Inter-Club Competitions & Inter-County Competitions*)

Please note: All reference to white clothing should read 'predominately white'

#### **Above the Waist – Sanction K will apply if not adhered to**

- Please note that all members of the side or team shall wear the same Club Apparel/colour above the waist.
- If from different clubs then default is white.
- If Club apparel is not the same design for men/women in mixed events then default is white.
- County apparel is only to be worn when representing your County Association in Inter-County Competitions\*

#### **Playing Shirt:**

- Club
- White Polo Top / Shirt / Bowls Shirt
- County\*

#### **Pullover/Gilet or Cardigan:**

- Club
- County\*
- White or equivalent

#### **Jacket:**

- Club
- County\*
- White

#### **Waterproofs/Rainwear:**

- White
- Club
- County\*
- Bowls England Licensed

#### **Headgear:**

- White
- Club
- County\*
- Bowls England Licensed

#### **Footwear – Sanction K will apply if not adhered to**

#### **Shoes / Trainers:**

- Flat soled ('heel-less') footwear no colour restrictions

#### **Sandals:**

- Sandals shall not be permitted except in medical circumstances where a doctor's note has been provided.

In all of the above players governed by requirements of a specific ethnic culture shall be permitted to wear their traditional dress if they so desire.



## Appendix B1 (Cont.)

### **Dress code: National Competitions – Qualifying Stages** (*Individual Competitions, Inter-Club Competitions & Inter-County Competitions*)

Please note: All reference to white clothing should read 'predominately white'

#### **Below the Waist – Sanction K will apply if not adhered to**

- Please note that all members of the side or team shall wear the same Club apparel/colour above the waist.
- If from different clubs then default is white.
- If Club apparel is not the same design for men/women in mixed events then default is white.
- County apparel is only to be worn when representing your County Association in Inter-County Competitions

#### **Trousers:**

- Permitted Colours: Black, Grey, Maroon, Navy, White
- Club
- County\*
- Bowls England Licensed
- Belt (if worn) to match
- No jeans permitted to be worn

#### **Shorts:**

- Permitted Colours: Black, Grey, Maroon, Navy, White
- Club
- County\*
- Bowls England Licensed
- Belt (if worn) to match
- No jeans permitted to be worn

#### **Cropped Trousers/Culottes:**

- Permitted Colours: Black, Grey, Maroon, Navy, White
- Club
- County\*
- Bowls England Licensed
- Belt (if worn) to match
- No jeans permitted to be worn

#### **Skirts:**

- Permitted Colours: Black, Grey, Maroon, Navy, White
- Club
- County\*
- Bowls England Licensed
- Belt (if worn) to match
- No jeans permitted to be worn

#### **Waterproofs/Rainwear:**

- White
- Club
- Bowls England Licensed

In all of the above players governed by requirements of a specific ethnic culture shall be permitted to wear their traditional dress if they so desire.

**Appendix B2**

**Dress code National Competitions – National Finals**

*(Individual Competitions, Inter-Club Competitions & Inter-County Competitions)*

Please note: All reference to white clothing should read 'predominately white'

**Above the Waist – Sanction K will apply if not adhered to**

- Please note that all members of the side or team shall wear the same Club or County apparel/colour above the waist.
- If from different clubs then default is white.
- If Club/County apparel is not the same design for men/women in mixed events then default is white.

**Playing Shirt:**

- Club
- County
- White Polo Top / Shirt / Bowls Shirt

**Pullover/Gilet or Cardigan:**

- Club
- County
- White or equivalent

**Jacket:**

- Club
- County
- White

**Waterproofs/Rainwear:**

- White
- Club
- County
- Bowls England Licensed

**Headgear:**

- White
- Club
- County
- Bowls England Licensed

**Footwear – Sanction K will apply if not adhered to**

**Footwear:**

- Flat soled ('heel-less') footwear no colour restrictions

**Sandals:**

- Sandals shall not be permitted except in medical circumstances where a doctor's note has been provided.

In all of the above players governed by requirements of a specific ethnic culture shall be permitted to wear their traditional dress if they so desire.

**Appendix B2 (Cont.)**

**Dress code National Competitions – National Finals**

*(Individual Competitions, Inter-Club Competitions & Inter-County Competitions)*

Please note: All reference to white clothing should read 'predominately white'

**Below the Waist – Sanction K will apply if not adhered to**

- Please note that all members of the side or team shall wear the same Club or County apparel/colour below the waist.
- If from different clubs then default is white.
- If Club/County apparel is not the same design for men/women in mixed events then default is white.

**Trousers:**

Permitted Colours: TBC

- Club
- County
- Bowls England Licensed
- Belt (if worn) to match
- No jeans permitted to be worn

**Shorts:**

Permitted Colours: TBC

- Club
- County
- Bowls England Licensed
- Belt (if worn) to match
- No jeans permitted to be worn

**Cropped Trousers/Culottes:**

Permitted Colours: TBC

- Club
- County
- Bowls England Licensed
- Belt (if worn) to match
- No jeans permitted to be worn

**Skirts:**

Permitted Colours: TBC

- Club
- County
- Bowls England Licensed
- Belt (if worn) to match
- No jeans permitted to be worn

**Waterproofs/Rainwear:**

- White
- Club
- County
- Bowls England Licensed

In all of the above players governed by requirements of a specific ethnic culture shall be permitted to wear their traditional dress if they so desire.



## Appendix C: Code of Conduct

### *Competitors in Bowls England National Finals*

This code of conduct applies to all players who participate in the National Finals, and is to be read in conjunction with the Bowls England Regulations for National Championships and National Competitions.

All players who participate shall at all times conduct themselves in such a manner that reflects favourably upon themselves, Bowls England and the County or Club that they are representing.

In particular they should:

1. Report punctually at the prescribed time and place.
2. Be conversant with and comply with the Laws of the Sport of Bowls and all Bowls England domestic rules and by-laws relating to National Championships and National Competitions.
3. Adhere to Bowls England's Betting Integrity Guidance (Bowls England Regulation No.10.6)
4. Adhere to Bowls England's Disciplinary Regulations – [click here to view](#)
5. Adhere to Bowls England's Anti-Doping Guidance – [click here to view](#)
6. Adhere to Bowls England Equality, Diversity and Inclusion (EDI) Policy – [click here to view](#)
7. Matches may be conceded at any time, but shall be conceded where it is not mathematically possible for the losing participant/team/side to win
8. Not cheat in order to gain unfair advantage, or cheat in order to deliberately lose a game.
9. Not use any form of gamesmanship in an attempt to gain unfair advantage.
10. Comply strictly with the guidance relating to 'slow play' (Appendix D).
11. Not render themselves unfit through alcohol on or off the bowling green.
12. Show respect to colleagues, opponents and officials and not subject them to any physical or verbal abuse at any time.
13. Smoking on the green is prohibited during all games (see Appendix G).
14. The use of electronic devices (including mobile phones) on the green is prohibited during all games.

Failure to adhere to the above shall result in an initial warning that shall be issued by a nominated Umpire. Should the player continue to not adhere they shall be subject to disqualification at the discretion of the Tournament Director (or Nominated Deputy), whose decision shall be final.

## **Appendix D: Slow Play**

The following shall be enforced in the National Finals, only the Tournament Director (or Nominated Deputy) can disqualify players. The time limits below include trial ends in all events.

### **Four Bowl Singles**

A 2 hours and 30 minutes time limit will apply in all rounds.

After delivering their first bowl, players will only be allowed to walk up to the head under the following circumstances:

- *After delivery of their third and fourth bowls. Should a player wish to visit the head prior to this point the permission of the marker shall be obtained.*

### **Two Bowl Singles**

A 1 hour and 15 minutes time limit will apply in all rounds.

After delivering their first bowl, players will only be allowed to walk up to the head under the following circumstances:

- *After delivery of their first bowl*

### **Four Bowl Singles & Two Bowl Singles**

The maximum time that a player may deliberate before playing a bowl is two minutes, the time being calculated from the time the previous bowl played came to rest. Should this rule be breached they shall be warned by the marker. A further non-compliance shall be reported by the Marker to an Umpire in charge of the green who will issue a second warning and inform the Tournament Director (or nominated Deputy). On a third occurrence the Tournament Director (or Nominated Deputy) will enforce Sanction N and disqualify the offending player from taking any further part in the competition.

### **Three Bowl Pairs**

A 2 hours and 30 minutes time limit will apply in all rounds.

After delivering their first bowl, players will only be allowed to walk up to the head under the following circumstances:

- *The leads: after delivery of their third bowl*
- *The skips: after delivery of their second & third bowl*

### **Four Bowl Pairs**

A 3 hours and 30 minutes time limit will apply in all rounds.

After delivering their first bowl, players will only be allowed to walk up to the head under the following circumstances:

- *The leads: after delivery of their fourth bowl*
- *The skips: after delivery of their third and fourth bowl*

### **Triples**

A 3 hours and 30 minutes time limit will apply in all rounds.

After delivering their first bowl, players will only be allowed to walk up to the head under the following circumstances:

- *The leads: after delivery of their third bowl*
- *The seconds: after delivery of their third bowl*
- *The skips: after delivery of their second & third bowl*

### **Fours**

A 3 hours and 30 minutes time limit will apply in all rounds.

After delivering their first bowl, players will only be allowed to walk up to the head under the following circumstances:

- *The leads: after delivery of their second bowl*
- *The seconds: after delivery of their second bowl*
- *The thirds: after delivery of their second Bowl*
- *The skips: after delivery of their first & second Bowl*

### **Pairs, Triples & Fours**

The maximum time that a player may confer before delivering a bowl is two minutes, the time being calculated from the time the previous bowl played came to rest. Should this rule be breached the opposing skip will warn the offending skip and notify the Umpire. A further non-compliance witnessed by the Umpire in charge of the green will result in a second warning, the Tournament Director (or nominated Deputy) will be informed. On a third occurrence the Tournament Director (or Nominated Deputy) will enforce Sanction N and disqualify the offending player from taking any further part in the competition.

## Appendix E: Bowls

### 1 All Rounds prior to the National Finals

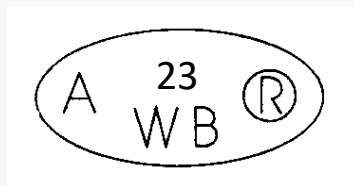
- 1.1 To include all National Championships up to and including the County Final. All early rounds and All England rounds in National Competitions. All Inter-County Competitions including Regional Finals.
- 1.2 All bowls shall bear a clearly legible stamp which has an expiry date of 1985 or later. These bowls can be used for the rounds leading to the National finals. All bowls shall be from the same set as stated in the [Laws of the Sport V4 \(Law 2.4\)](#).



- 1.3 Bowls that do not meet the requirements of 1.2 shall not be used (Sanction L)
- 1.4 In the rounds leading to the National Finals of the National Championships and National Competitions when no Umpire is present, the opposing player or players shall check the legality of the date stamp on each other's bowls.
- 1.5 Should a player wish to challenge the suitability of their opponent's bowls, as regards the bias, they should refer to [The Laws of the Sport V4 \(Laws 52.4 and 52.5\)](#). Bowls England Domestic Regulations also apply. The fee to be lodged shall be £50.

### 2 National Finals

- 2.1 All bowls must bear a stamp in accordance with the current [Laws of the Sport V4 \(Law 53\)](#). A World Bowls Ltd stamp with a date of the current year (2023) or later will be valid.



- 2.2 Bowls that do not meet the requirements of 2.1 shall not be used (Sanction L)
- 2.3 Should a player wish to challenge the suitability of their opponent's bowls, as regards the bias, they should refer to [The Laws of the Sport V4 \(52.4 and 52.5\)](#). Bowls England Domestic Regulations also apply. The fee to be lodged shall be £50.



## **Appendix F: Umpires**

Umpires shall be appointed to officiate by the County Association or Bowls England in conjunction with the [English Bowls Umpires Association](#).

## **Appendix G: Smoking and Anti-Doping**

Smoking on the green is prohibited during all matches played under the jurisdiction of Bowls England. For the purpose of clarification the 'green' in this instance is deemed to include a minimum of 1 metre of the bank surrounding the playing area. Should the Club where the game is being played have a total ban on smoking on its premises, the Club prohibition shall apply. Failure to adhere to this shall result in disqualification. This prohibition includes all electronic cigarettes.

The Anti-Doping rules of Bowls England are the UK Anti-Doping Rules published by UK Anti-Doping (or its successor), as amended from time to time. The UK Anti-Doping Rules can be viewed at: <https://www.ukad.org.uk/about/anti-doping-rules>

## **Appendix H: Bowls England Policies and Guidelines**

All players must be aware and abide by Bowls England Regulation 2.5.2, which can be found [here](#). This includes, but is not limited to, abiding by all disciplinary/misconduct regulations and policies such as safeguarding, anti-doping and inclusion.

## **Appendix I: Players with Disabilities**

Wheelchairs shall be of a type approved by Bowls England following consultation with relevant disability bowls organisations and greenkeepers. For guidance on purchasing a wheelchair [click here](#).

The wheelchair shall be recognised as being an integral part of the wheelchair player in all instances when a jack or bowl is displaced or interfered with by the wheelchair as per the current Laws of the Sport of Bowls.

At the point of delivery of the jack or bowl, refer to the current Laws of the Sport of Bowls V4.

Walking frames shall be of a type approved by Bowls England following consultation with relevant disability bowls organisations. The types currently recognised for use in England are the 'Rollator' (to be used to get to the green but not to be sat on the green during play), 'Bowls Buddy' and the 'Bowls Walker'.

Physically disabled bowlers may use a support such as the Bowls Mate or walking aid with a base at least than 76 millimetres in diameter as a support whilst bowling the jack or bowls or as an aid whilst walking.

A physically disabled player may kneel on the green to deliver the bowl or jack in accordance with the current laws of the game.

Artificial devices may be used by players with disabilities for delivering the jack or bowl provided they are approved by Bowls England following consultation with relevant





disability bowls organisations. Currently this includes the standard bowling arm, the DHB Hacksaw bowling arm and the bowls launcher

The individual shall decide before a game starts if they are going to use an aid. If they decide to then they shall use it for the duration of that game.

Visually impaired bowlers can use any form of assistance necessary (including having director with them) to allow them to take part as long as the assistance is approved by Bowls England, this includes having a white breakable string down the centre or the rink. The director shall not be deemed to be in contravention of the Laws of the Sport if that director relays to the player the instruction of the skip, assists in directing the player or keeps the player informed as to where the jack or bowl finished after delivery. Visually Impaired players who are using a Director and String for a match out of courtesy are to inform the opposition and the Umpire before the match starts

Players with a hearing disability may use electronic devices (i.e. walkie-talkies) in line with the current Laws of the Sport of Bowls.

#### **Appendix J: Inclement Weather**

Inclement weather shall mean the existence of rain or abnormal climatic conditions (whether they be those of hail, snow, cold, high wind, extreme high temperature or any combination thereof) by virtue of which it is either not reasonable or possible to play.

Unusual situations not covered within the above can often arise. If a situation arises that is not covered by the above, Players, Markers, Umpires and Officials shall use their common sense and a spirit of fair play to decide on the appropriate course of action.

In the event of inclement weather and no play/no further play being possible as determined by Tournament Director, Umpire and/or Greenkeeper (or players if no officials are in attendance) the following shall apply as relevant:

##### ***National Championships – Including all County Rounds***

1. All matches are to be played to a finish as referred within the Laws of the Sport V4 – Game Stoppages (Law 33)
2. If it is not possible to conclude play on the day then the match must be completed prior to the next round taking place.

##### ***Middleton Cup/Johns Trophy***

1. When a match is stopped by the Umpire and/or the Greenkeeper play shall cease on all rinks simultaneously. Ends started but not completed shall be declared 'dead'.
2. When it is not possible to resume the match on the day:
  - a. If the total number of ends played equals or exceeds 42 the match shall be deemed to have been completed and the score shall stand.
  - b. If the total number of ends played is less than 42, the remainder of the match shall be played at a later date (please refer to Laws of the Sport Law 33: Game Stoppages for guidance).



3. The participating counties shall agree a date for any postponed/abandoned match/es to be played.
4. Bowls England shall make the final decision on the date/venue of a postponed/abandoned match/es should participating counties be unable to agree amicably.
5. At National Finals, the decision of the Tournament Director on postponed/abandoned matches shall be final.

#### ***Balcomb Trophy/Walker Cup***

1. When a match is stopped by the Umpire and/or the Greenkeeper play shall cease on all rinks simultaneously. Ends started but not completed shall be declared 'dead'.
2. When it is not possible to resume the match on the day:
  - a. If the total number of ends played equals or exceeds 10 the match shall be deemed to have been completed and the score shall stand.
  - b. If the total number of ends played is less than 10, the remainder of the match shall be played at a later date (please refer to [Laws of the Sport Law 33: Game Stoppages'](#) for guidance).
3. The participating counties shall agree a date for any postponed/abandoned match/es to be played.
4. Bowls England shall make the final decision on the date/venue of a postponed/abandoned match/es should participating counties be unable to agree amicably.
5. At National Finals, the decision of the Tournament Director on postponed/abandoned matches shall be final.

#### ***Amy Rose Bowl/White Rose Trophy***

1. When a match is stopped by the Umpire and/or the Greenkeeper play shall cease on all rinks simultaneously. Ends started but not completed shall be declared 'dead'.
2. When it is not possible to resume the match on the day:
  - a. If the total number of ends played equals or exceeds 10 the match shall be deemed to have been completed and the score shall stand.
  - b. If the total number of ends played is less than 10, the remainder of the match shall be played at a later date (please refer to [Laws of the Sport Law 33: Game Stoppages'](#) for guidance).
3. The participating counties shall agree a date for any postponed/abandoned match/es to be played (White Rose Trophy only).
4. Bowls England shall make the final decision on the date/venue of a postponed/abandoned match/es should participating counties be unable to agree amicably (White Rose Trophy only).
5. At National Finals, the decision of the Tournament Director on postponed/abandoned matches shall be final.



### ***Tony Allcock Trophy/Club Two Fours***

1. When a match is stopped by the Umpire and/or the Greenkeeper (or players if no officials are in attendance) play shall cease on all rinks simultaneously. Ends started but not completed shall be declared null and void.
2. When it is not possible to resume the match on the day:
  - a. If the total number of ends played equals or exceeds 10 the match shall be deemed to have been completed and the score shall stand.
  - b. If the total number of ends played is less than 10, the remainder of the match shall, wherever possible, be played at a later date (please refer to Laws of the Sport Law 33: Game Stoppages for guidance).
3. Should it not be possible to play the match to its conclusion by the closing date of the round, the winner shall be decided by the toss of a coin.
4. At National Finals, the decision of the Tournament Director on postponed/abandoned matches shall be final.

### ***Top Club (Men's & Women's)***

1. When a match is stopped by the Umpire and/or the Greenkeeper (or players if no officials are in attendance) play shall cease on all rinks simultaneously. Ends started but not completed shall be declared null and void.
2. When it is not possible to resume the match on the day:
  - a. If the total number of ends played in each discipline equals or exceeds five the match shall be deemed to have been completed and the score shall stand.
  - b. If the total number of ends played in each discipline is less than five, the remainder of the match shall, wherever possible, be played at a later date (please refer to 'Law 33: Game Stoppages' for guidance).
3. Should it not be possible to play the match to its conclusion by the closing date of the round, the winner shall be decided by the toss of a coin.
4. At National Finals, the decision of the Tournament Director on postponed/abandoned matches shall be final.



### **Appendix K: Draw for Rinks**

1. A draw for rink/s to be played on shall be made in accordance with the current Laws of the Sport (Law 1.3).
2. For a match requiring one rink, a minimum of two rinks shall be offered to the opponent.
3. For a match requiring more than one rink, the minimum number of rinks offered shall be at least equal to the number of rinks required as follows:
  - i. One rink required = Two rinks offered
  - ii. Two rinks required = Two rinks offered
  - iii. Four rinks required = Four rinks offered
  - iv. Five rinks required = Five rinks offered
  - v. Six rinks required = Six rinks offered
4. How rinks are determined for play is a domestic matter.

## **Appendix L: Bowl Displacement (Law 37.1)**

To alleviate the situation of a player stopping one of their own team's bowls from disturbing the head and gaining an advantage either by lifting a bowl at rest or stopping their bowl in its original course two new laws were approved and included within the Laws of the Sport V4 (Law 37.1).

These are:

**Law 37.1.3** If a player deliberately stops or displaces one of their own team's bowls in its original course; or

**Law 37.1.5.3** if a player deliberately lifted a bowl at rest to allow their own bowl to continue on its original course.

### ***World Bowls Laws Committee Clarification***

*The World Bowls Laws Committee felt that the clear deliberate intent by a player to interfere with their own bowls in this way should warrant a more severe penalty which would be the forfeiture of the game. Both laws state that the "defaulting team will forfeit the game to their opponent". The new laws were not introduced to 'punish' players that stop a bowl from entering the ditch that hasn't disturbed the head. The World Bowls Laws Committee understands this occurs on a regular basis but it is a timely reminder that no bowl belonging to the players on the rink of play should be lifted, stopped or displaced. Other laws are available to deal with situations where bowls displace other bowls and the jack and these should still be applied accordingly.*

Where that team is part of a Side game, only that team will forfeit the game, not the entire Side. Below details what the penalty will be:

### **Middleton Cup & Johns Trophy – Sanction Q**

- Group Stages > Rink conceded, 2 points and 50 shots awarded to the opposing side
- Knock-Out Stages > Rink conceded and 50 shots awarded to the opposing side

### **Men's Club Two Fours & Tony Allcock Trophy - Sanction Q**

- 50 shots deducted from the offending team.

### **Men's & Women's Top Club - Sanction Q**

- Rink conceded, 1 point and 50 shots awarded to the opposing side

## Revisions

Date	Reg.	Details
March 2023	52.5.3.3	Regional Finals removed, section on neutral greens for area finals in senior competitions added.
April 2023	50.1.7.3	Clarification to events includes
April 2023	50.1.7.4	New Rule reference players singles entries when moving club/county
April 2023	50.1.7.5	New Rule reference players team entries when moving club/county
April 2023	50.2.5	Reference to Appendix K added
April 2023	50.2.6	Reference to Appendix J added
April 2023	51.1.2	Reference to Appendix C added
April 2023	51.1.6	Reference to Appendix E added
April 2023	52.5.7	New regulation 5.5 added to include 5.7.1 > 5.7.3
April 2023	53	Renumbered
April 2023	53.1.8	New rule reference bowl displacement
April 2023	54	Renumbered
April 2023	54.1.9	New rule reference bowl displacement
April 2023	55	Renumbered

April 2023	55.1.11	New rule reference bowl displacement
April 2023	56	Renumbered
April 2023	56.1.3	Set date & playing time referred regulation number updated
April 2023	56.1.8	New rule reference bowl displacement
April 2023	57	Renumbered
April 2023	57.1.3	Set date & playing time referred regulation number updated
April 2023	57.1.6	Points clarification added for winning a discipline
April 2023	57.1.9	New rule reference bowl displacement
April 2023	58	Renumbered
April 2023	58.1.8	New rule reference bowl displacement
April 2023	59	Renumbered
April 2023	59.1.9	New rule reference bowl displacement
April 2023	60	Renumbered
April 2023	61	Renumbered
April 2023	62	Renumbered
April 2023	63	Renumbered
April 2023	64	Renumbered
April 2023	65	Renumbered



April 2023	Sanction Q	New Sanction reference Bowl Displacement
April 2023	Appendix A	Added
April 2023	Appendix B	Added
April 2023	Appendix C	Added
April 2023	Appendix D	Added
April 2023	Appendix E	Added
April 2023	Appendix F	Added
April 2023	Appendix G	Added
April 2023	Appendix H	Added
April 2023	Appendix I	Added
April 2023	Appendix J	Added
April 2023	Appendix K	Added
April 2023	Appendix L	Added